

2549

VALLEY AND
BLACK BROOK RIDGE

With Barbara Dibelon
5/26/198

Site	p	Δp	Δe	e calc	e map	time	r
(A) Mill Brook Road trail head	28.93				2600	12:12	$\frac{3320-2600}{28.93-28.08} = \frac{720}{0.85} = 0.847$
(B) Trail junc, Balsam Lake Mtn & Balsam Lake	28.08	1.08	950	3320	3320	1:06	
(C) FIRS	28.20	0.96	845	3214			$\frac{3320-2370}{29.16-28.08} = \frac{950}{1.08} = 0.880$
(D) water in Black Brook bed	28.26	0.90	792	3162			
(E) (lunch) steep open DP slope	28.32	0.84	739	3109	1:30 to 1:43	1:30 to 1:43	
(F) ledge on E, brook flowing	28.53	0.63	554	2924			
(G) Springs on E, several channels	28.62	0.54	475	2845			
(H) open sunny LOP glade on E	28.72	0.44	387	2757			
(I) Photos of 4 giant SUGs	28.80	0.36	317	2687		2:40	
(J) another giant SUG grave	28.86	0.30	264	2634			
(K) broad valley; 1st HEM grave	28.98	0.18	158	2528		3:00	
(L) 1st ASH	29.00	0.16	141	2511			
(M) Probably 2 ^o	29.05	0.11	97	2467			
(N) Hem grave on E slope	29.08	0.08	70	2440			
(O) 1st cut log & skid road	29.10	0.06	53	2423			
(P) Bridge for Newcomb- Hardenbergh Trail	29.16	0.00	0	—	2370	3:23 to 3:36*	

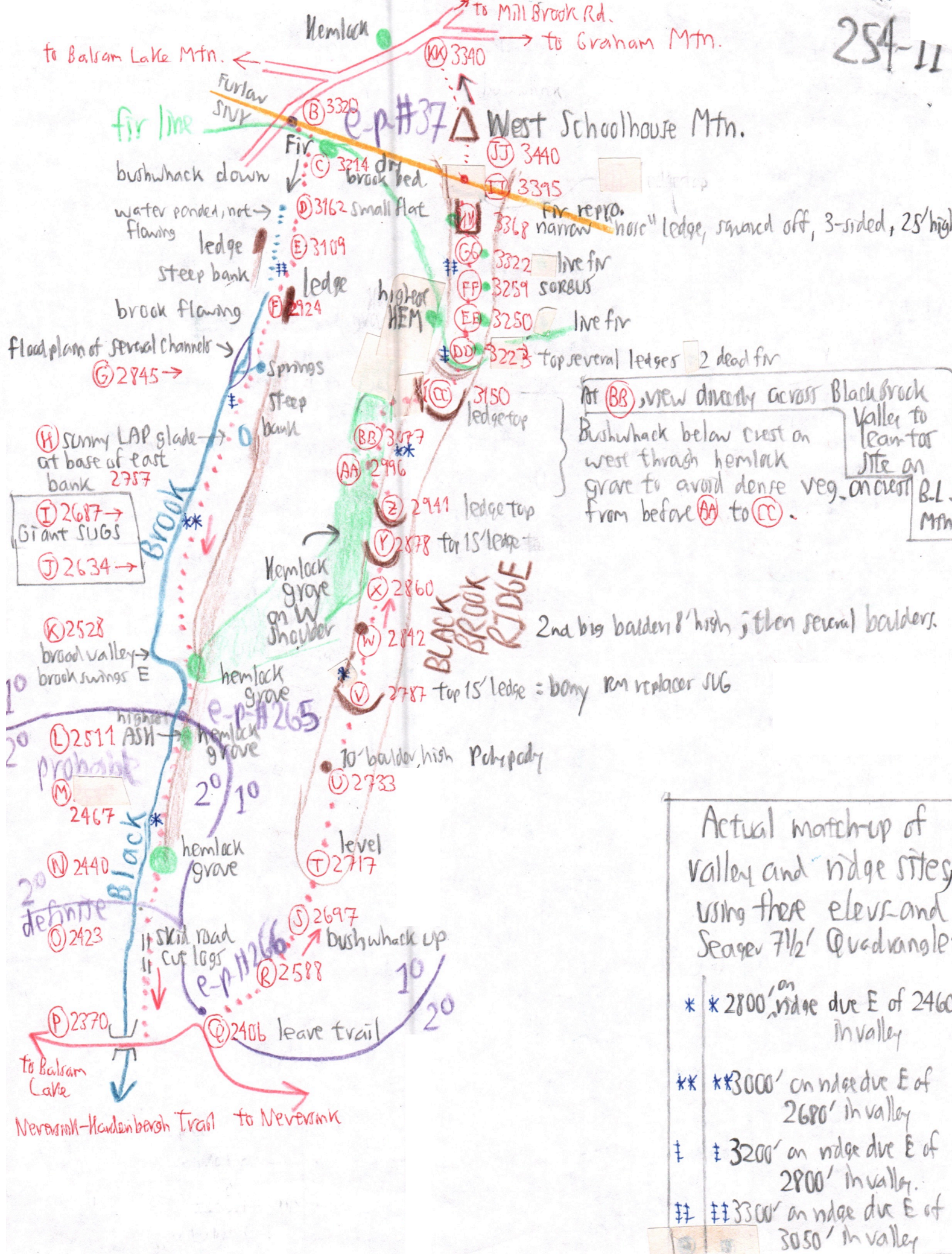
This side of sheet: descent along Black Brook
 ← Other side of sheet: ascent along Black Brook Ridge

* Watch could have been up to 1/2 hr slow be this time

A Jeep with 3 people rode by below Graham Rd. Jct. parked at (B). Licence plate NY LFD 334. Are there the Gouds, caretakers or illegal public?

BLACK BROOK RIDGE 25410

Site	p	Δp	Δe	e calc.	e map	time	r
(P) Bridge for Newersink - Hambenbergh Trail	29.16	0.00	-	-	2370	B23 to B36 marker	
(Q) leave trail i begin bushwhack	28.92	0.04	36	2408			
(R) trees	28.92	0.24	218	2588			
(S) Ash	28.80	0.36	327	2697			3440-2370 =
(T) level	28.78	0.38	347	2717			29.16-28.98
(U) boulder	28.76	0.40	363	2733			= 1070
(V) ledge	28.70	0.46	417	2787			1.180
(W) boulder	28.64	0.52	472	2842			= 0.907
(X) Hem grave begins	28.62	0.54	490	2860			
(Y) ledge top	28.60	0.56	508	2878			
(Z) ledge top	28.53	0.63	571	2941			
(AA) hem grave	28.47	0.69	626	2996			
(BB) Opposite Leanter on BL Mtn	28.38	0.78	707	3077		4:45, prob 5:35.	
(C) ledge top	28.30	0.86	780	3150			
(DD) two dead fir	28.22	0.94	853	3223			
(EE) live fir (three)	28.19	0.97	880	3250			
(FF) more fir.	28.18	0.98	889	3259			
(GG) narrow nose ledge, base	28.11	1.05	952	3322			
(HH) ledge top, ^{truncated} narrow nose	28.06	1.10	998	3368			
(II) blaze	28.03	1.13	1025	3395			
(JJ) Summit, West Schoolhouse	27.98	1.18	1070	3440	3440	head 5:16 6:06 actual	3440-2600 =
(KK) Graham Rd. Junc.	28.10			3340		5:23 head 6:13 actual	2896-2798 =
(A) Mill Brook Rd. trail head	28.96			2600		7:15 actual head 6:25	= 840 =
						↑ Windwatch lost 50 minutes	0.980 = 0.857



At (BB) view directly across Black Brook Valley to Pan-tor site on B.L. Mtn. Bushwhack below crest on west through hemlock grove to avoid dense veg. on crest from before (AA) to (CC).

Actual match-up of valley and ridge sites using these elevs and Seager 7 1/2' Quadrangle-

- * * 2800' on ridge due E of 2460' in valley
- ** ** 3000' on ridge due E of 2680' in valley
- ‡ ‡ 3200' on ridge due E of 2800' in valley.
- ‡‡ ‡‡ 3300' on ridge due E of 3050' in valley

SUGAR MAPLE 25412 →

Dominant at (D) and to 30"

Many 24" at (E) and 80 to 100' tall.

Three 30" at (F). Dominant.

Photo of a 40" at (G) Barbara took MK

Still dominant to 30" at (H). photo of damaged giant

Two photos of 4 giants at (I). About a dozen on site to 36". Growth rate of broken giant: 8 to 12 rings / inch radius. At this rate, an 18" radius (36" diam.) tree is 144 to 216 years old.

Another grave of giants 30 to 36" at (J).

To 30" at (K)

Scattered big SUB in 2° at (O).

On Black Brook Ridge

At (S) 30" trees.

Small at (V)

Present at (Z)

4" at (FF)

25412 →

FIR

At (C).

Three dead at (DD) 4", 4", 12" x 20'

Three live at (EE) 3" x 15'

One 3" live at (GG)

Dead 3" at (MM) but some live seedlings & saplings

6" on NW live shoulder between (JJ) & (KK).

CHERRY

(E) present.

(F) "

33" at (Q) plus several others almost as big (to 30").

30" at (T)

Grave at (T) to 24": 4 trees.

Dominant at (V) to 18" max

Dominant at (W) to 22"

Dominant at (Y)

(Z), (X)

Y. BIRCH

To 30" at (E)

(F)

To 28" at (K)

Photo 44" at (Q)

36" at (BS)

E-HEMLOCK

(K) Grave of about 1/2 dozen trees to 28", many smaller to 100' tall.

Common above (L) on slope above the brook on east. Smaller than at (K)

Grave at (N) on base of E bank - to 24".

Reappear at (X) in understory beneath RM & BC. To 30" x 10" only, on W crest & shoulder only. Grave of larger, to 16" trees to N. To 12" only at (Y).

Present at (Z), (AA), (BB) on W shoulder of ridge. To 24" at (AA)

Two on W of crest at (EE), 18".

BEECH

(F)

22" dead at (R)

Dense young beech up a long way on the ridge, replacing dead mature trees.

Thick at (S); dead dying & live to 20"

Thick at (Z)

Thick at (CC)

ASH

1st at (H), 12" & 3" two trees.

22" at (L) = 2nd

3rd at (O)

4th at (S) on ridge = 20".

dead at (V)

RED MAPLE

At (V) to only

(Z)

(X)

SORBUS

Seedlings at (EE)

5" tree at (FF)

5" at (MM)

Seedlings betw (JJ) & (KK).

Grand Cover

CB: (D), (AA), in flower
at (DD) and (JJ) to (KK)

OX: (D), (F), in flower
at (K), (U), (AA), (DD)

W: (D)

MC: (DD)

DP: large patch
in open at (E)
(U)

TB: (DD)

LAP (E) to (F), open
sunny glade at (H)

ALL (E) to (F)

CAUL (E) to (F)

TRAILIC (E) to (F)

HERACLEUM (E) to (F)

ATRILYP (E) to (F)

POLYPOD (U) on baldie

SM: (Y), (DD)

Blackbrook
Ridge has
almost
continuous
dense veg.
from (A) to
(GG), extra-
ordinary for
the Cort hills.
Mainly young
beech & VA.
Disfruits
bushwhacking!
More open at (HH)

Shrubs

254-13

VA: (E) to (F), 'dense at (X), (Z), (CC),
(FF)

MM: (L)

RLAC: (K) = Under P&B & Hem on drier
talus, sub dom on flood plain

ILEX MONT: first at (W),
dense at (BB) & (FF)

AMEL: (W)

Till depth: BC 'cake at (W) = 30" deep roots.
The whole of Blackbrook Ridge has NO wetlands

Comment on hemlock SW of Graham Rd Junc,
between (KK) & (B) = This tree is not really that
isolated from the grove (X) → (BB) and outcrops
at (EE). South winds could easily blow seeds
up to here.

First Growth: At (L) is the 1st ASH-only one tree.

At (M), there is still NO sign of roads & stumps, but the
number of large trees is down = only scattered ones.
By (O), log road & cut logs appear, only 53' above
the bridge in elevation.

The whole Blackbrook Ridge above the Newcomb-
Kandenbergh Trail is 10'. Gary Lovett noted big
BCs at (A) to (K) & prompted this explanation.